

**CERTIFIED LAND CORNER RECORDATION**

DESCRIPTION OF CORNER EVIDENCE FOUND, AND ORIGINAL RECORD (if known)

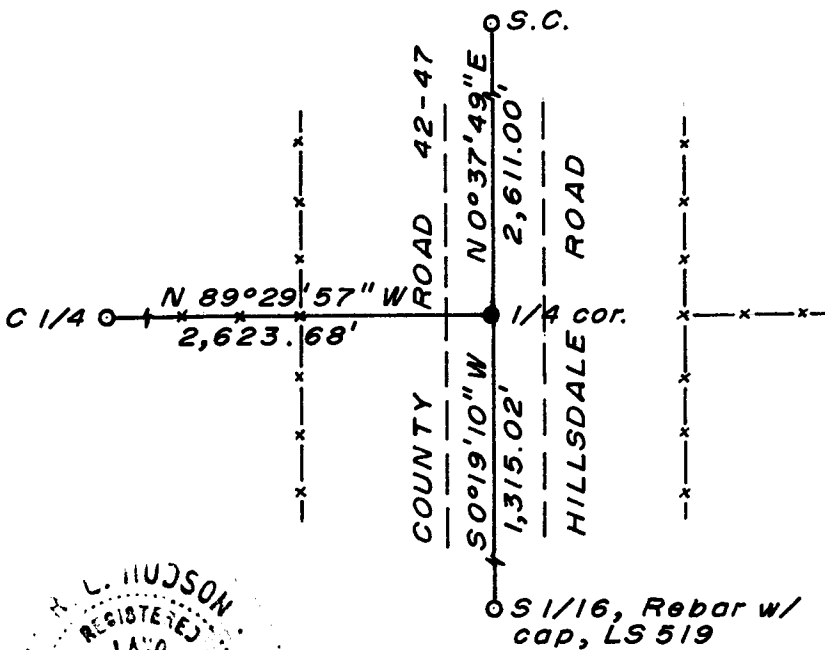
LOCATION Found a spike, in paved road surface; origin unknown.  
 1/4 Accepted spike as marking the corner.  
 S.13 S.18 G.L.O. record - Limestone, 15" x 12" x 3" - 1871.  
 T.14N.  
 R.64W. R.63W.  
 6th P.M.

DESCRIPTION OF MONUMENT AND ACCESSORIES ESTABLISHED  
 TO PERPETUATE THE ORIGINAL LOCATION OF THIS CORNER:

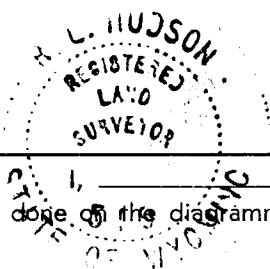
At the corner: Set a 5/8" dia. x 24" long rebar with 1 1/2" dia. aluminum cap.  
 Accessories: None.

SKETCH, WITH COURSE AND DISTANCE TO ADJACENT CORNER IF DETERMINED IN THIS SURVEY.  
 (May Sketch or Paste Reproduction on Reverse Side.)

Basis of Bearing: By solar observation, one-half mile west of this corner.  
 Distances based on measurements by electronic means.



Aluminum cap set flush with paved road surface.  
 Aluminum cap stamped:  
 1/4 COR.  
 LS 519 1979



I, R. L. Hudson certify that I have carefully performed ~~or reviewed~~ the work done on the diagrammed corner as reported on this recordation form and approve the same.

R. L. Hudson Wyoming L.S. No. 519  
 Signature of Surveyor Registration No.

STATE OF WYOMING,  
 Office of Clerk and Recorder,  
 County of Saramee

534727

This "corner record" was filed for record on the 6 day of July, 1977, was noted on the cross-index plat and is assigned page No. \_\_\_\_\_, in book No. \_\_\_\_\_.

Janet C. Whitehead  
 County Official

Cross Index No. _____	T. _____	R. _____	Mer. _____
<u>L-1</u>	T. <u>14</u>	R. <u>63</u>	Mer. _____
<u>L-25</u>	T. <u>14</u>	R. <u>64</u>	Mer. _____
_____	T. _____	R. _____	Mer. _____
_____	T. _____	R. _____	Mer. _____
_____	T. _____	R. _____	Mer. _____
_____	T. _____	R. _____	Mer. _____

L-25 14-64